

TOM

JOE

JOHN

# HAND TIMES

## INTRO

V1 LIGHT PIANO OCTAVES

USE INTRO AS INTERLUDE (HALF OR FULL?)

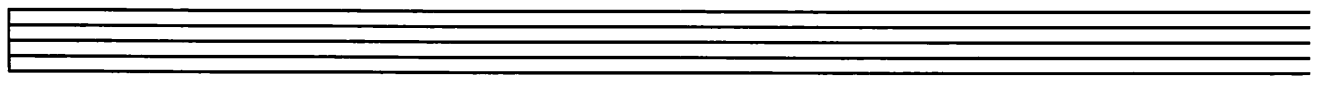
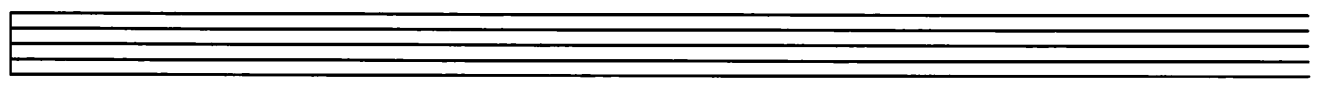
V2 FULL BODY ACCOMPANIMENT

## INTERLUDE (MANDO LEAD)

V3 FIRST HALF - LIGHT PIANO  
SECOND HALF - FULL SOUND

GO TO CODA

D.C. AL FINE



1-72

**HAND FINALS**

Handwritten musical notation for 'HAND FINALS'. It consists of two systems of staves. The first system has a treble clef and contains several measures of music with notes and rests. The second system has a bass clef and contains several measures of music, including a section labeled '(SINGALE)'. There are various annotations and markings throughout the piece, including a circled '7.' and a circled '12.'.

VII

(JUST R.H. R/5/C)

Handwritten musical notation for section VII. It features a treble clef and several measures of music. Above the staff, there are notes and chord symbols: F5, Bb/D, C/E, Bb/D, F5. Below the staff, there are notes and chord symbols: C, F/A, Bb, C'sust-3, F, C/E. The section is labeled '(LIGHT)' and 'B'.

Handwritten musical notation for section VIII. It features a treble clef and several measures of music. Above the staff, there are notes and chord symbols: Bb/D, F/C, Bb, F/A, G'sust-3, C'sust-3. The section is labeled 'B'.

Handwritten musical notation for section IX. It features a treble clef and several measures of music. Above the staff, there are notes and chord symbols: F5, Bb/D, C/E, Bb/D, F5. The section is labeled 'A'.

# HARD TIMES - 2

## INTRO AS INTERLUDE

**I**

**V2**

**A**

**B**

**A**

TO INTERLUDE



# HAND TIMES - 3

**INT**  
MAND  
PIANO

M  
P

(SIMILE)

**V3**

**CODA**

D.C. AL FINE